



TECHNOLOG



Metrolog 420MET - 4-20mA Data Logger

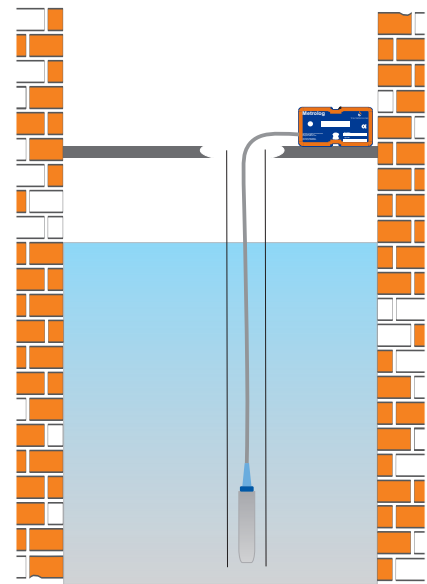
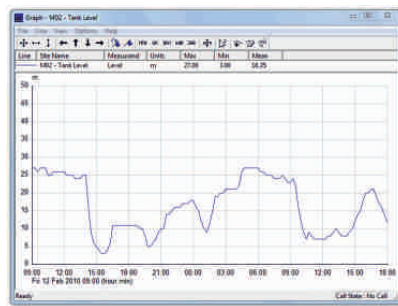
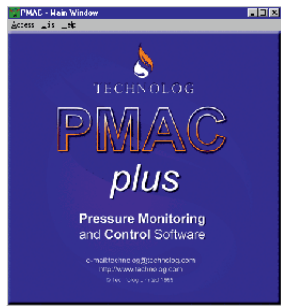
The Metrolog 420MET is designed for water depth and water mains pressure recording. It stores instantaneous measurements or an average of several measurements taken during the logging period.

- Self powered by an internal lithium cell
- No separate battery required to power a 4 - 20mA depth transmitter
- Measurement resolution exceeds 0.02% F.S.
- Accuracy is greater than $\pm 0.1\%$ F.S.
- Light activated LCD
- Compatible with Technolog's communication and configuration software for PCs and PDAs
- Optional PSTN modem available

Technical Specifications



Comprehensive data analysis is provided by Technolog's Windows™- based PMAC software



- Connectors** 10 way input, 4 way communication serial port, conforming to MIL-C_26482
- Supply** Generates flash powered 11 volt supply for transmitters and 4-20mA loop signals
Internally powered by lithium cell - factory replaceable
Battery life - 5 years at a sampling rate of 3 minutes
- Data Storage** Rotating store or store until full
- Recording Interval** Logging rate programmable from 2 seconds to 1 hour
- Measurement Accuracy** Dependent upon accuracy of depth transmitter
- Logger Resolution** Better than 0.02% F.S.
- Logger Accuracy** Better than $\pm 0.1\%$ F.S.
- Operating Temperature** -10 C to +50C
- Memory** 128 k - maximum 64k per channel
143 days depth data recorded at 15 minute intervals
71 days combined depth and flow data recorded at 15 minute intervals
- Environmental** IP68

Metrolog 420MET - 4-20mA Data Logger

For further information contact:



Technolog Limited
Ravenstor Road
Wirksworth
Matlock
Derbyshire DE4 4FY
United Kingdom

Tel: +44 (0)1629 823611
Fax: +44 (0)1629 824283
Email: technolog@technolog.com
Internet: www.technolog.com

Copyright Technolog 2011
All rights reserved.
Specifications subject to change without prior notice.
DS129000A & DMR n/a